

IMPORTANT NOTICE

To assist with the monumental task of disaster cleanup, please set out damaged items for collection in the following separated piles:

- **Garbage**
(mattresses, furniture)
- **Household Hazardous Waste**
(paints, solvents, herbicides, fertilizer, etc.)
- **Appliances, Electronics, TVs, Monitors, Tires**
- **Scrap Metal**
- **Tree limbs and trimmings**

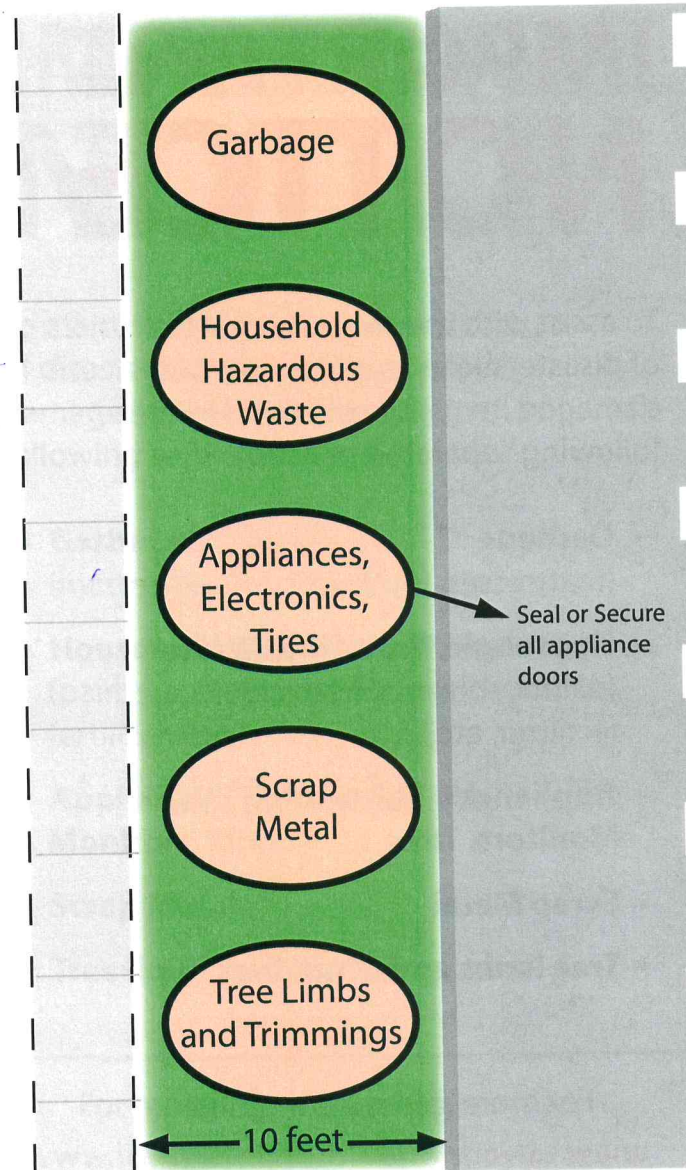
For more information go to

www.iowadnr.gov/disaster.html

or contact your local solid waste agency.

To help with debris collection, please:

Separate debris into five categories, keeping it out of the road and away from trees, poles, fire hydrants and meters.



Place all debris between sidewalk and curb